



'

'

'

'

'

.()

.()

,)

,

(

'

'

'

'

'

.(,)

'

1- Assessment
2- Maier



.()

)

)

(

)

(

(



.(, ,)

()

.()

.()

.()

()

()

, ,)

()

.(

()

.()

.()

U

SPSS

)

/

(

/

. /
()

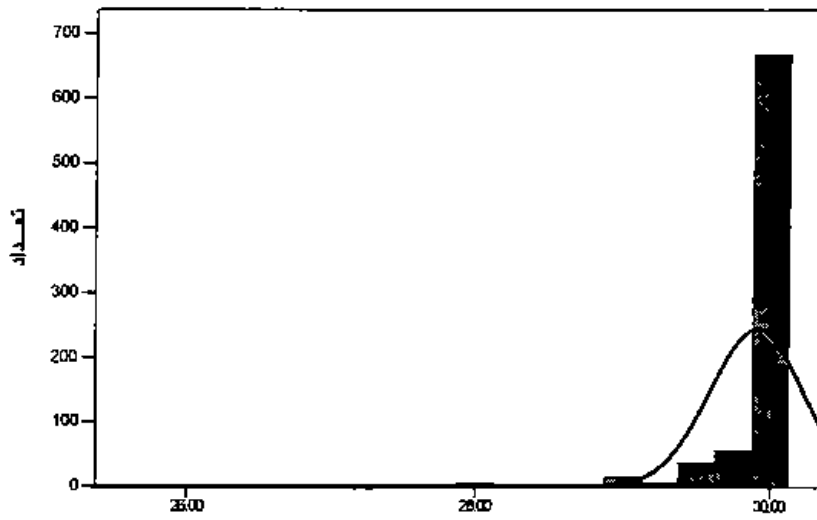
/

	$r = / /$		/)
	$r = / /$		/		(
	$r = / /$		/		,
	$P < /$		/		

Z

()

Mean = 29.9057
Std. Dev. = 0.32233
N = 790



()

sig		P75	P50	P25						
* /	/					/	/	/		/

/ *

/ /

/ /



-

<i>Sig</i>			/	
* /	/			
* /	/			
/	/			

/ *

/ /

-

<i>Sig</i>			/	
* /	/			

/ *

-

<i>Sig</i>			/	
* /	/			
* /	/			
* /	/			
* /	/			

/ *



/ / / / /

.(/)

.(/)

Sig				-	
/	/				
/	/				

U

Z

Sig	Z	U				
/	/	/	/			
/	/	/	/			
/	/	/	/			
/	/	/	/			

, U Z ,
,

Sig	Z	U				
/	/	/				
/	/					

, U Z ,

Sig	Z	U					
* /	/		/				
/	/		/				
* /	/	/	/				

/ *

U

Z

Sig	Z	U					
/	/						
/	/	/					

()



/

()

(/)

()

()

()

()

()

-
- 1- Silverman
 - 2- Tyson



() () .()

, , .(, ,)

() () .()

() () .

.(,)

".() . , .

"

".() . , .

"

-
- 1- Thornton
 - 2- Campbell
 - 3- Lee
 - 4- Stogdill



"() .

"

"

"() .

"

"() .

"() .

"() .

"

"() .

"

"() .

"() .

"

"() .

"

"() .

"

"

"() .

-
20. Campbell, D.G;Lee, C.(1988). "Self Appraisal in performance Evaluation: Development versus Education". *Academy of management review: (13);PP:302-314.*
 21. Certo, Samuel. C. (1992). "Modern management ". *Fifth Edition, Allyn and Bacon.*
 22. Koontz, Donnell. (1988). "Essential of management". *Mc Graw – Hill. P:313.*
 23. Pecheone, Raymond L& Chune Ruth R (2006). "Evidence in Teacher Education: "The performance Assessment for California Teacher(PACT)". *Journal of Teacher Education, V.(57), No(1), PP:22-36.*
 24. Smith, D.E. (1986). "Training programs for performance Appraisal". *Academy of management Review, 1,PP:22-40.*
 25. Thornton, G.C.III.(1980). "Psychometric of self appraisals of performance". *Personnel Psychology, 33,PP:263-271.*
 26. Tyson, L.A;Silverman, S.(1994). "An analysis of physical education and non-physical education teachers at elementary and secondary levels on statewide teacher assessment". *Journal of Teaching in physical education, 14, PP : 85-98.*